

KORG

KONTROL EDITOR

Owner's Manual

NTS-1 digital kit mkII

Introduction.....	2
What is the KORG KONTROL EDITOR?	2
Caution	2
Operating requirements.....	2
Installation.....	3
Quick Start.....	3
Starting the KORG KONTROL EDITOR.....	3
Basic Usage	4
PROGRAM tab	4
Managing User Oscillator and Effects	5
Global tab	6
Preference Settings	7
Menu.....	8
File menu	8
Edit menu	8
Communication	9
Help menu	9
Troubleshooting.....	10
Software won't start up	10
Can't transfer data	10
Can't save global data in a file.....	10

All product names and company names are the trademarks or registered trademarks of their respective owners.
Specifications and appearance are subject to change without notice for improvement.

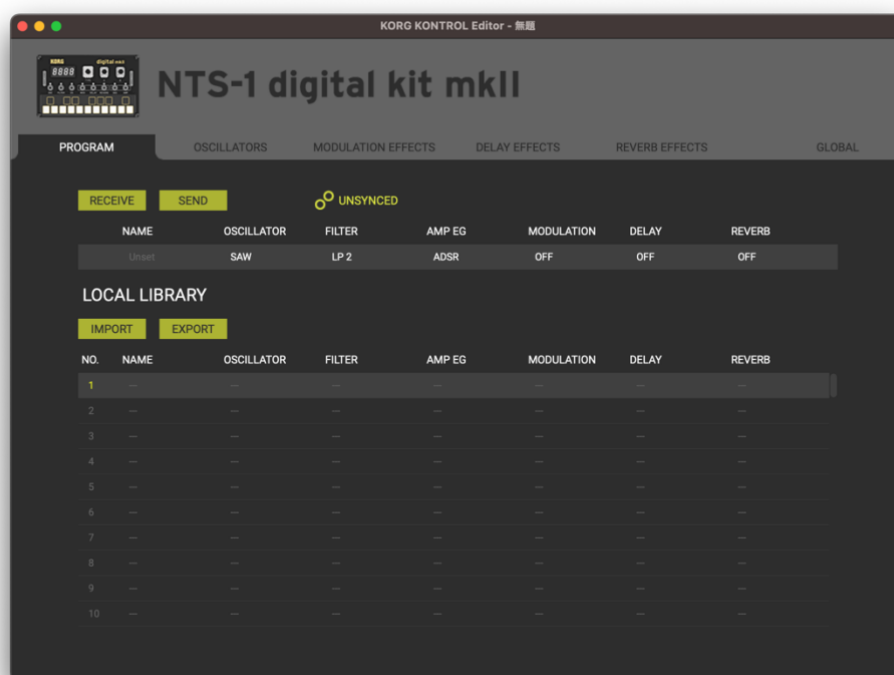
Introduction

Thank you for purchasing the NTS-1 digital kit mkII.

To help you get the most out of your new instrument, please read this manual carefully.

What is the KORG KONTROL EDITOR?

The KORG KONTROL EDITOR lets you manage the custom user oscillators and effects loaded on the NTS-1 digital kit mkII.



Caution

- ⚠ Do not disconnect your NTS-1 digital kit mkII or power off the unit while the Librarian is running.
- ⚠ Do not operate your NTS-1 digital kit mkII or the Librarian while any data is being transmitted.

Operating requirements

A computer that satisfies OS requirements and a USB cable are necessary to use the KORG KONTROL EDITOR. Please refer to the KORG KONTROL EDITOR User's Manual for the operating environment.

Installation

Please refer to the KORG KONTROL EDITOR User's Manual for the operating environment.

Quick Start

Starting the KORG KONTROL EDITOR

In order to use KORG KONTROL Editor with a USB connection on Windows, you must download the Korg USB-MIDI Driver from the Korg website and install it as described in the accompanying documentation. (korg.com/)

1. Use a USB cable to connect your NTS-1 digital kit mkII to your computer.
2. In the "KORG KONTROL EDITOR" folder, select "KORG KONTROL EDITOR" to begin.

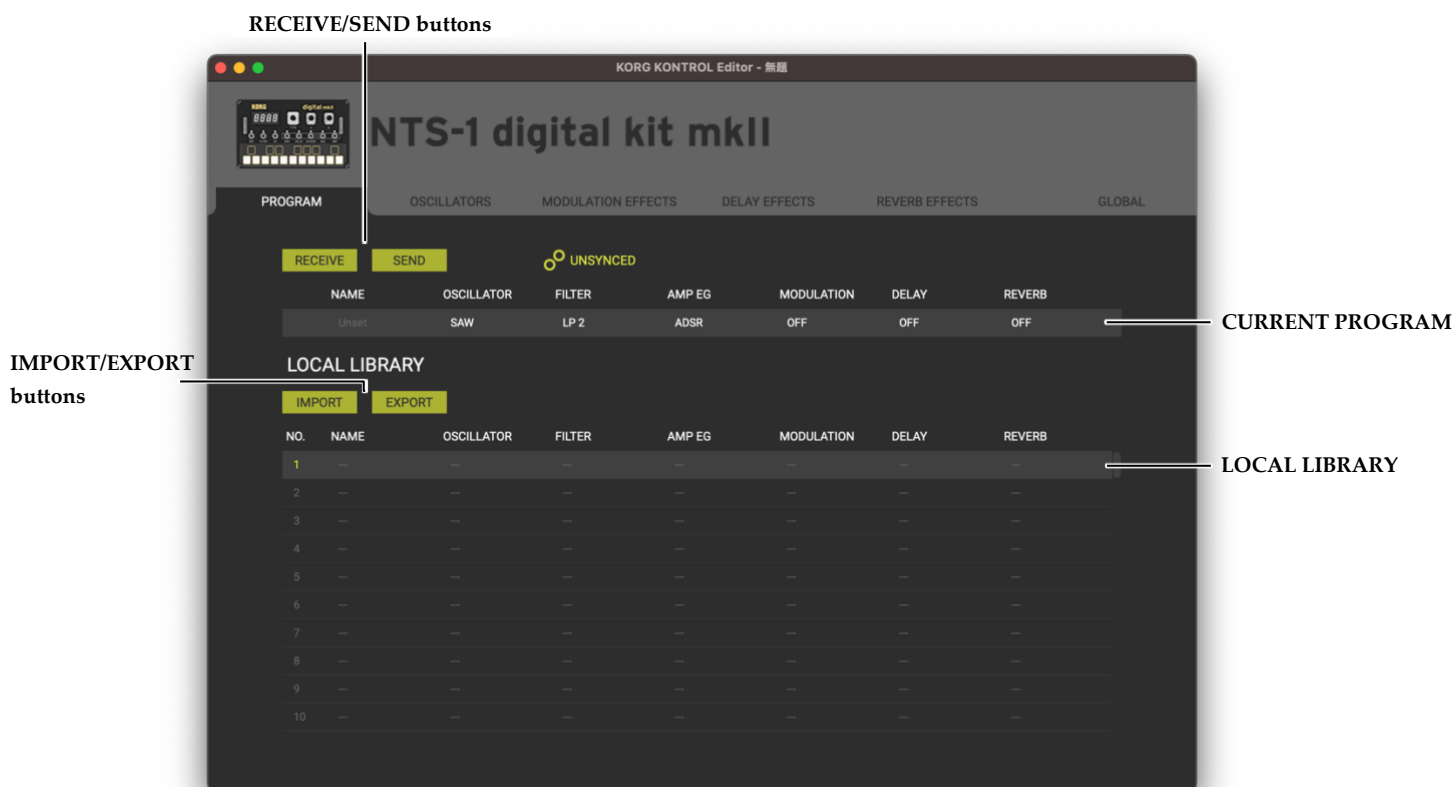
Mac	The "KORG KONTROL EDITOR" folder is located in the "Applications" folder.
Windows	The "KORG KONTROL EDITOR" folder is located in the taskbar "Start"-"All apps"-"KORG."
3. A list of connected Korg MIDI controllers will be displayed. Please select the NTS-1 digital kit mkII. Data will be automatically loaded from the device.

Basic Usage

This section provides a brief explanation of the KORG KONTROL EDITOR's(NTS-1 digital kit mkII) screens and their functions.

PROGRAM tab

This is the screen that is displayed when starting up the KORG KONTROL EDITOR and selecting the NTS-1 digital kit mkII



Load the program from NTS-1 digital kit mkII

When the RECEIVE button is pressed to load the program of the NTS-1 digital kit mkII, the program data is synchronized and the display changes to "SYNCED". If the current program does not match, the display changes to "UNSYNCED".

Management program

The current program can be added to the local library by dragging and dropping it into the program list in the LOCAL LIBRARY. The EXPORT button allows you to export the program, and the IMPORT button allows you to reimport a program that has been exported.

Tip The name of the program can be edited in the LOCAL LIBRARY.

Tip If the exported program uses user oscillator or effects, the corresponding user units must be present on the device for it to sound as expected.

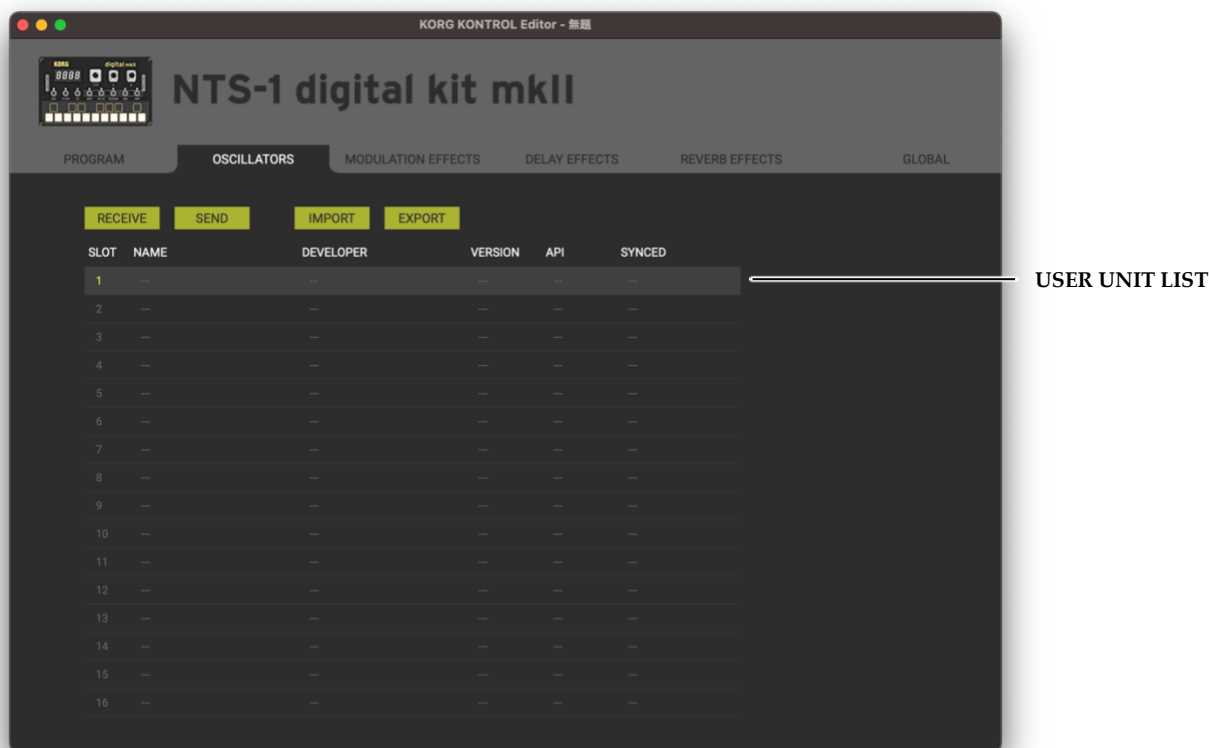
Write the current program to NTS-1 digital kit mkII

Drag and drop (or double-click) a program from the LOCAL LIBRARY to the current program to write the program to the NTS-1 digital kit mkII.

Tip "Comm" → "Write User Data" will transfer the program, user oscillator, and all user effects to the NTS-1 digital kit mkII.

Managing User Oscillator and Effects

Each tab contains a list with one row for every slot available on the NTS-1 digital kit mkII. These lists are used to sort and load custom user oscillators and effects built with the logue SDK (see “logue SDK” at korg.com/products/synthesizers/nts_1_mk2/). The term “user unit” is used as a shorthand to refer to user oscillators and effects.



Adding User Units

Drag a user unit file (.nts1mkiunit) into the user unit list corresponding to its type (oscillator, modulation effect, delay effect, or reverb effect), and drop it over the desired row.

User units can also be added using the “Import User Unit...” command under the file menu.

Exporting User Units

Select the user units you wish to export and press the EXPORT button.

User units cannot be exported directly from an NTS-1 digital kit mkII; in order to export a user unit you must first load it in the KORG KONTROL EDITOR.

You can also export User Units by clicking “File” → “User Export”.

⚠ When exporting user units, make sure to review its developer's license, terms and conditions with regards to sharing and copying user units.

Removing User Units

Use the “Edit” → “Clear” command under the edit menu to clear the currently selected rows of the user unit list.

Sorting User Units

Drag and drop items in the user unit lists to change their order.

Tip You can also select several items and sort them all at once.

Synchronizing with the NTS-1 digital kit mkII

To update the user oscillators and effects on the NTS-1 digital kit mkII, press the SEND button. Once the

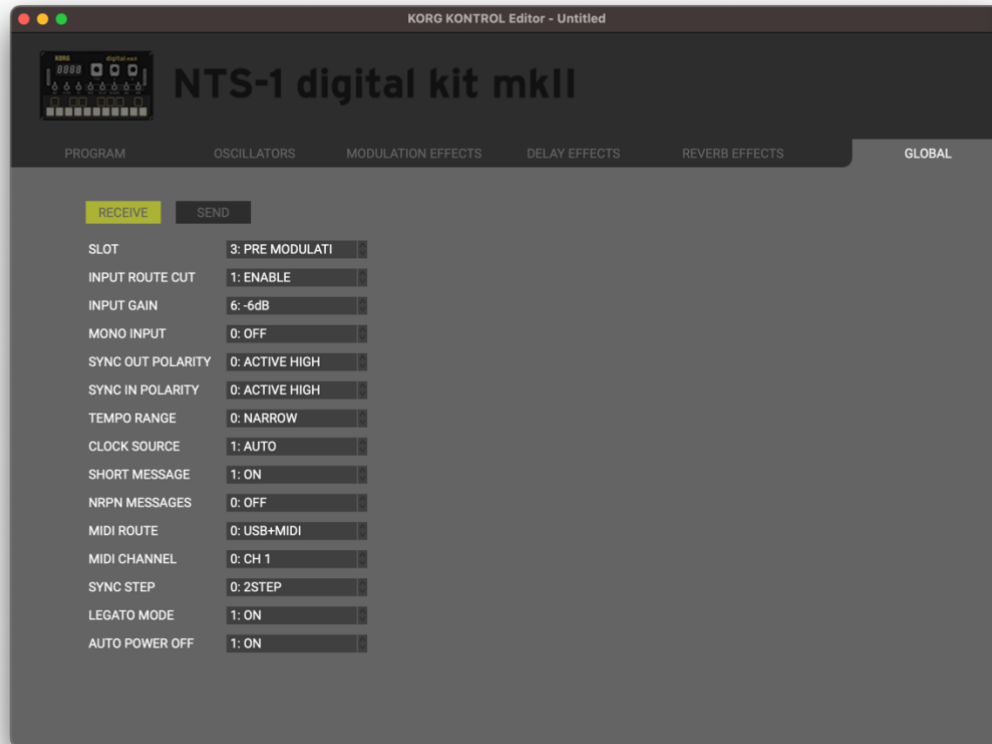
KORG KONTROL EDITOR (NTS-1 digital kit mkII) Owner's Manual

data transfer is over, the NTS-1 digital kit mkII will reflect the state of the user unit lists.

Press the RECEIVE button to refresh the user unit list to the current state of the NTS-1 digital kit mkII.

Global tab

The global parameters on the NTS-1 digital kit mkII can be edited in the Global tab.



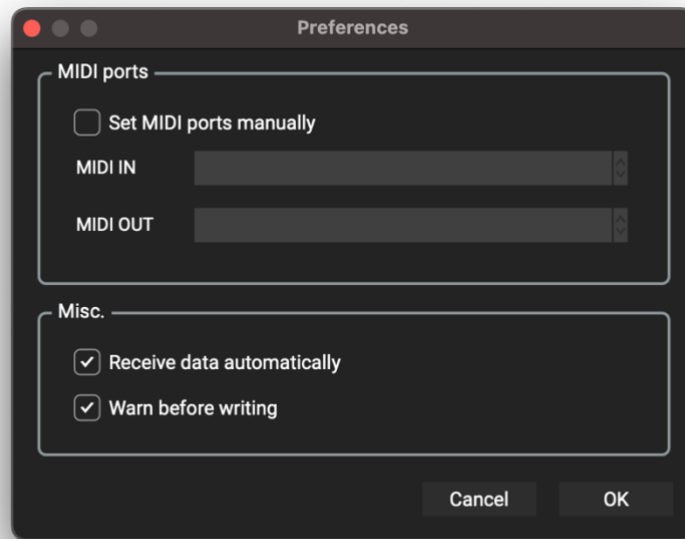
Send Global data to the NTS-1 digital kit mkII

Use the RECEIVE/SEND button to send and receive global setting data to the NTS-1 digital kit mkII.

When the data transfer is completed, the global settings of the NTS-1 digital kit mkII will be updated.

Preference Settings

Choose "Preferences ..." from the "Edit" menu to access the Preferences dialog box.



MIDI ports

Specify MIDI ports manually

Normally the NTS-1 digital kit mkII that is connected will be detected automatically. Turn this feature on if you want to specify the MIDI ports manually. Use this when several NTS-1 digital kit mkIIs are connected to the computer.

If this setting is on, it will set the MIDI IN/OUT ports for all of the connected NTS-1 digital kit mkIIs.

MIDI IN

Specify the MIDI IN port where your NTS-1 digital kit mkII is connected.

Tip Usually this will be the "KBD/KNOB" port in the NTS-1 digital kit mkII.

MIDI OUT

Specify the MIDI OUT port where your NTS-1 digital kit mkII is connected.

Tip Usually this will be the "SOUND" port in the NTS-1 digital kit mkII.

Misc.

Receive all data automatically

If this setting is on, data will be automatically loaded from your NTS-1 digital kit mkII when starting up the KORG KONTROL EDITOR. If this setting is off, data will not be automatically loaded.

Warn before writing data

If this setting is on, a warning dialog box will appear before writing data to your NTS-1 digital kit mkII. If this setting is off, data will be written without the appearance of a warning dialog box.

Menu

File menu

Select device

Opens the device select screen.

New

Creates a blank NTS-1 digital kit mkII workspace.

Open

Loads an NTS-1 digital kit mkII workspace file. (*.nts1mkii files)

Save

Saves the current NTS-1 digital kit mkII workspace.

Save As

Saves the current NTS-1 digital kit mkII workspace as a new file with a specified name.

Import Program (Program tab only)

Loads a program from file into the currently selected LOCAL LIBRARY program location.

Export Program (Program tab only)

Save the currently selected LOCAL LIBRARY program to a new file with a specified name.

Import User Unit...

Import a user unit file. If the tab corresponding to the user unit's type is already selected, the unit will be loaded in the currently selected row. Otherwise, the appropriate tab will be selected and the unit will be loaded in the first free row.

Export User Unit... (Use Unit tab only)

Export the currently selected row to a new file with a specified name.



When exporting data containing user units, make sure to review its developer's license, terms and conditions with regards to sharing and copying user units.

Edit menu

Undo

Returns to the state prior to the previous operation.

Redo

Returns to the state prior to executing the "Undo" command.

Clear

Clears the selected programs or user units.

Preferences...

Displays the Preferences dialog box.

Communication

Receive All Data

Receives all program and user oscillators and effects and global data from the NTS-1 digital kit mkII.

Send All Data

Sends all program and user oscillators and effects and global data to the NTS-1 digital kit mkII.

Receive Current Program (Program tab only)

Receives current program to the NTS-1 digital kit mkII.

Send Current Program (Program tab only)

Sends current program to the NTS-1 digital kit mkII.

Receive User Unit. (User Unit tabs only)

Receives all user oscillators or effects in the current selected tab to the NTS-1 digital kit mkII.

Send User Unit. (User Unit tabs only)

Sends all user oscillators or effects in the current selected tab to the NTS-1 digital kit mkII.

Receive Global Data (Global tab only)

Receives global data to the NTS-1 digital kit mkII.

Send Global Data (Global tab only)

Sends global data to the NTS-1 digital kit mkII.

Help menu

About...

Displays the software version of the KORG KONTROL EDITOR.

Troubleshooting

Software won't start up

- Make sure that your computer meets the operating requirements.
- Check whether other applications might be running.
If other applications are running, the KORG KONTROL EDITOR might be unable to start up, or might be unable to transfer data. If you're unable to start up, close all other applications and try again.
- If another USB device is connected, the KORG KONTROL EDITOR might be unable to start up, or might be unable to transfer data. If you're unable to start up or unable to transfer data, disconnect the other USB device from your computer and try again.

Can't transfer data

- Make sure that the NTS-1 digital kit mkII has been detected by the connected computer.
If you are using Windows, go to the Control Panel, open "Hardware and Sounds" → "Device Manager," and check the "Sound, Video, and Game Controllers" tab.
When using Mac, please check the "MIDI Studio" window. Start "Applications" → "Utilities" → "Audio MIDI Setup" in order. Select "Display MIDI window" from the "Window" menu to open the "MIDI Studio" window.
- If you are using a USB connection on Windows, make sure that the latest Korg USB-MIDI Driver is installed. You can download the latest Korg USB-MIDI driver from the Korg website. korg.com/
- If you're specifying the MIDI ports manually, make sure that the MIDI port settings are correct.
- Make sure that the NTS-1 digital kit mkII is connected directly to your computer without a USB hub.

Can't save global data in a file

- Global data is included when saving the whole workspace using "Save" or "Save As...".